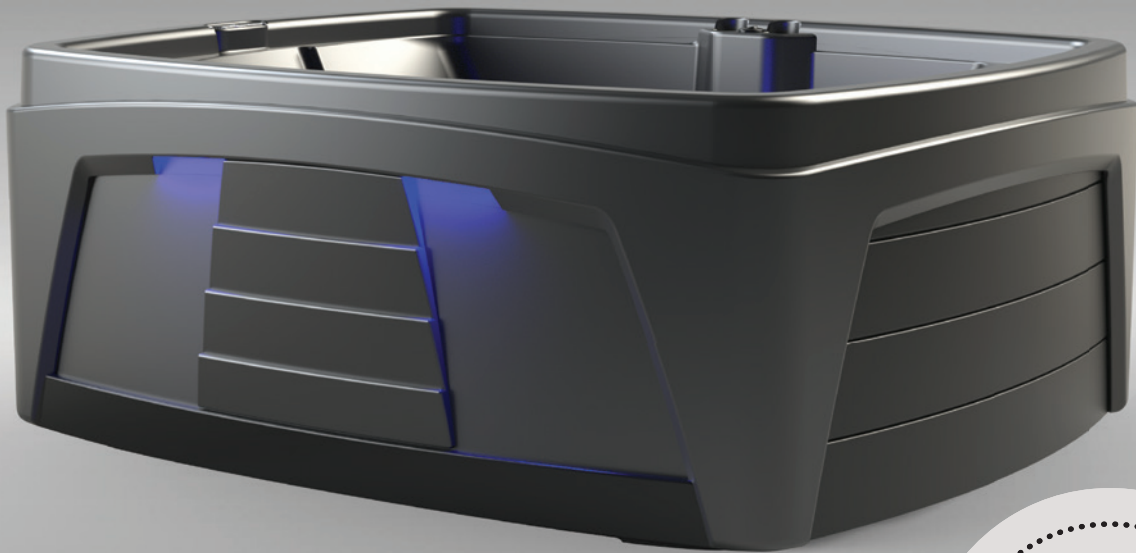


Feeling



FIRST COMES EMOTION AND THEN COMES FEELING

The emotion of your personal spa paradise will be absorbed by a **Feeling** like you've never known. The **Feeling** calls your name. It combines styling, comfort, ambience, serviceability and exceptional massage all in one truly portable and affordable spa. As its name suggests, the **Feeling** will trigger your emotions and command your attention. It's sleek, modern design not only exudes practical features, but it also blusters with features like a back lit, cascading waterfall, external LED scone lighting, hand recesses for easy portability and 100% accessibility to the plumbing and equipment. With unequaled comfort, ambience and practicality, the **Feeling** delivers a truly gratifying spa ownership experience.

The layout of the **Feeling** follows a traditional pattern with added versatility. You can relax in either of the two opposing lounge chairs or you can stretch your legs out and lay back in the full length lounge chair. The lounge chair also enables you to swing your legs around, sit up and enjoy a family conversation. The **Feeling** also contains a step in / cool down seat for easier and safer entering and exiting to and from the spa. This step also doubles as a cool down seat. If total emersion in the water makes you feel a bit overheated, sit on the cool down seat and enjoy the hot water comfort under your terms.

The **Feeling** is a true "Plug & Play" portable spa. It needs no special site preparation. The bottom of the **Feeling** is totally protected and the spa can be set on any solid level surface. No electrician is needed. The **Feeling** comes standard with a 15', 120V GFCI protected cord that is ready to be plugged into a dedicated 15amp standard wall receptacle. For those who plan to use their spa for long periods of time in cold weather, it can also be converted to 240V operation for better heating efficiency. The **Feeling** is very portable. It weighs approximately 350 lbs., dry weight, and it has built in hand recesses for easy lifting and handling. It can easily be transported in the back of most pick-up trucks, on a small trailer or in a moving truck so you don't ever have to worry about leaving your spa behind again. If you are looking for simplicity, comfort, quality, portability and affordability,

The human being possesses 5 senses, with one of the most important being touch. In the **Feeling** spa, we have developed a massage station with a discreet but oh so important little extra, the "**Feel it**" massage. Simply press down on the rounded nubs, at your leisure, to feel a unique massage sensation on the tips of your hands and feet.

This concept is unique and will provide you with an unforgettable moment of relaxation accessible at your fingertips.

We can provide the best Feeling...



SPECIFICATIONS

Size	82" x 72" x 35"
Dry Weight	350 lbs
Water Capacity	275 US gal
Filled Weight	2,600 lbs
Structure	Rotationally Molded Polyethylene
Insulation	Thermofoil Heat Blanket
Seating	3 Lounge Chairs 1 Dual Function Lounger 1 Step In / Cool Down Seat
Jets	24 Adjustable, Stainless Steel Jets
Waterfall	Cascading with LED Back Lighting
Lighting	Triple LED Main Light Quadruple Waterfall LED Backlighting External Corner Sconce LED Lighting
Drain Valve	Included
Equipment Pack	Gecko
Top Side Control	Gecko
Pump	2.0hpr, 2 Speed
Heater	1.0kw/4.0kw
Power Requirements	120V/15A / 240V/min 30A
Electrical Certification	ETL Can. / ETL U.S.
Cover	Premium Vinyl 4/2 Pitch



It's as *easy*
as one, two, *three*

Warranty: See the owner's manual.



Place



Fill



Plug 120V
(convertible 240V)

BUILT TO LAST A LIFETIME

- Virtually indestructible
- No cracking or chipping
- Easy surface care and repair

TRULY PORTABLE

- Light weight
- Fits through most doorways
- Easy to transport

NO HASSLE INSTALLATION

- No site preparation required
- Sits on any solid, level surface
- No electrician required (120V)

PROUDLY
MADE IN
Canada

** The ground must be well-leveled. Images and specifications may differ.