



WATERFALL BODY REPLACEMENT

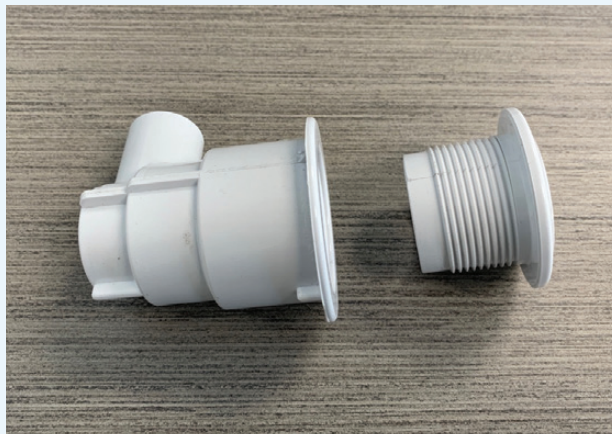
Please follow these steps if you need to replace the waterfall receptacle.

REQUIRED PARTS :

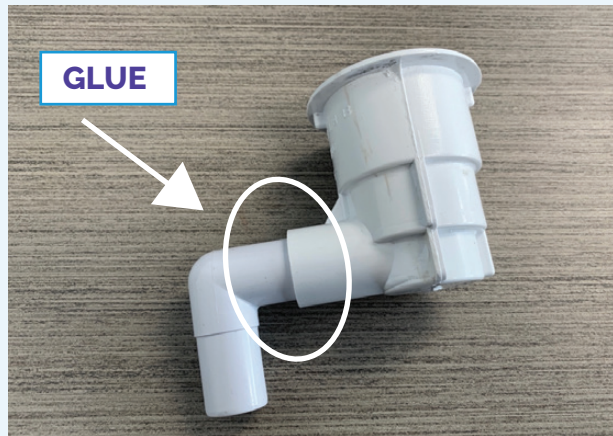
You will need:

- A new jet body (**#300-0022**)
- A flat gasket (**#300-0034**)
- A L-gasket (**#300-0072**)
- 90° adaptor (**#300-0220**)
- The Weld-On Glue 118ml (**#112-W12725WEL**)
- The wrench tool (**#7-25OUTIL**).

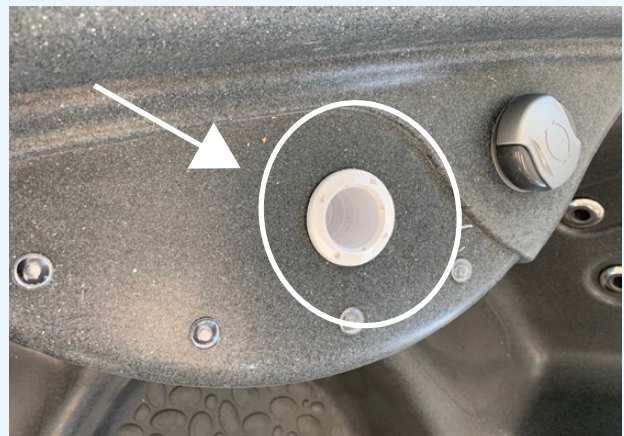
Parts are available from your local retailer.



- 1 Unscrew the front of the new jet body and install the new L-seal;



2 Using the glue, attach the 90° adaptor to the jet body. Respect the angle of the old assembly;

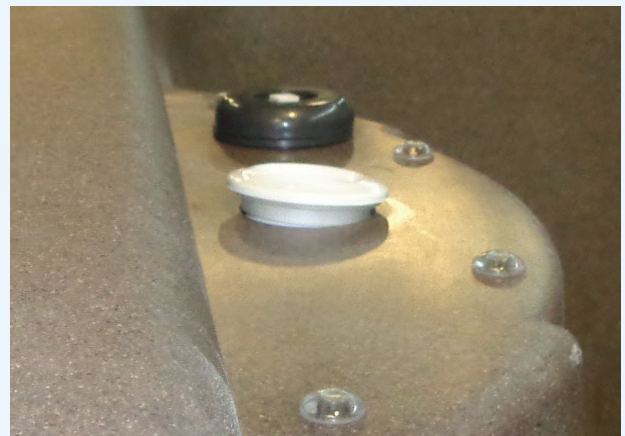


3 You must remove the old jet body from its location;

4 Open the spa panel under the waterfall;



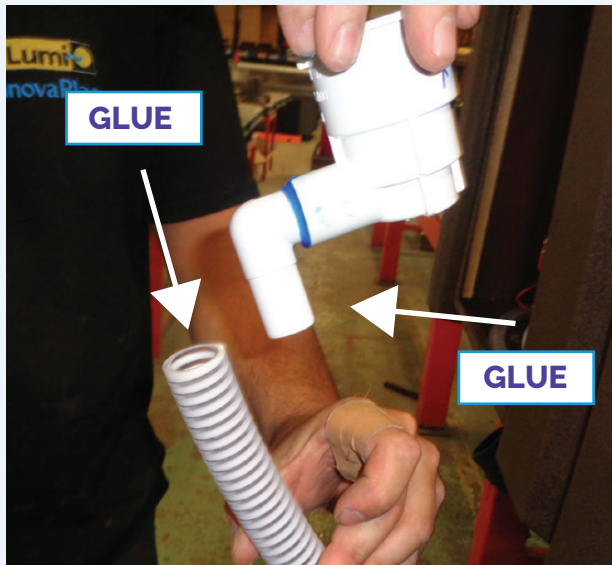
5 Using the wrench tool, align the spikes and unscrew the front of the jet body;



6 Once unscrewed, please be careful to keep the flat gasket that is between the jet and the spa wall. You can reuse or replace it with the new one that will be sent to you;



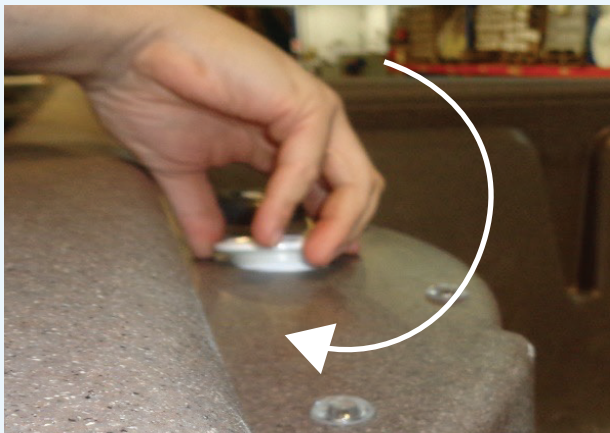
7 You must cut the hose just after the 90° adaptor. Please carefully notice the angle of the jet because when you will install the new one, it must be in the same direction;



- Put glue on the 90° adaptor and in the top of the inner pipe. Then, insert the 90° adaptor as deep as possible in the pipe;



- Replace the jet in the right place. Insert the flat gasket between the spa wall and the jet. Place the gasket with the groove facing the jet. Be sure to place the jet at the same angle as when you removed it;



- Screw on the faceplate and keep one hand on the jet underneath to prevent it from moving. Tighten with the wrench tool and reinstall the top of the waterfall.



Questions?

For any questions, please contact our service department:
1 866 995-8646, ext 226 or 227